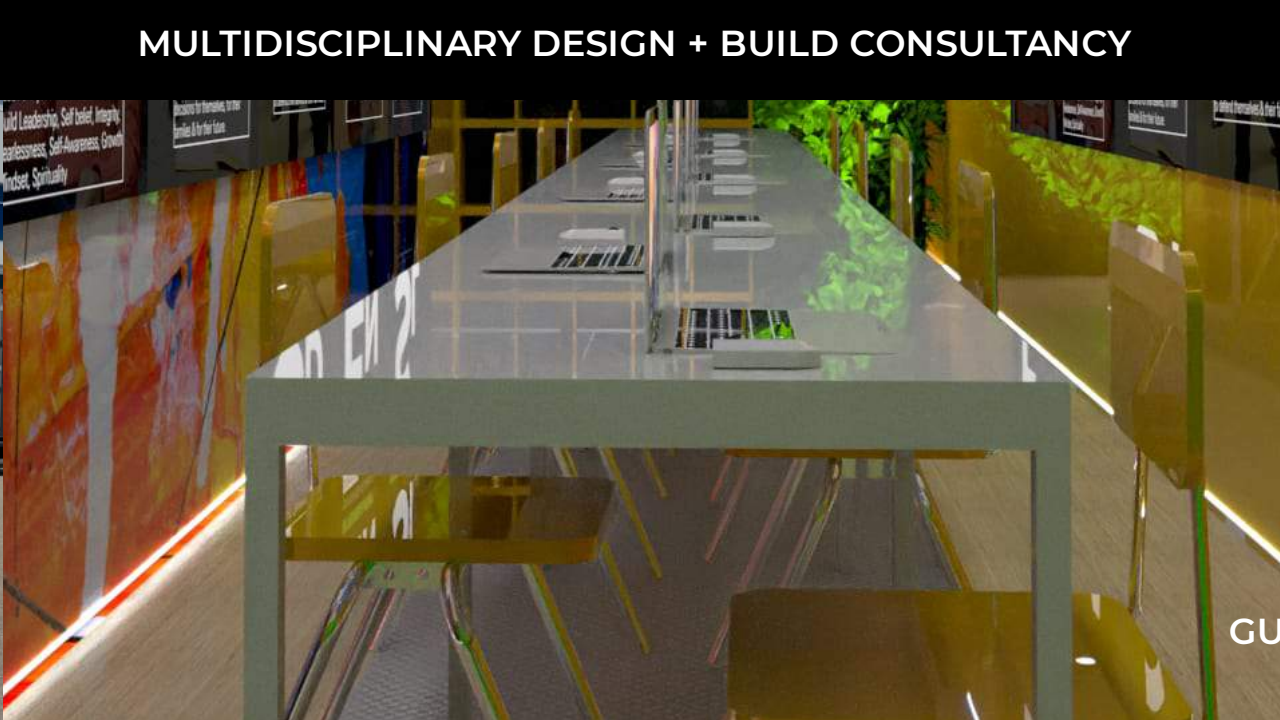


GUESSCREATIVE LLC
 MULTIDISCIPLINARY DESIGN + BUILD CONSULTANCY



GUESTON SMITH, AIA
 WWW.GUESSCREATIVE.COM
 GUESTON@GUESSCREATIVE.COM

What Guesscreative Can Do



Turnkey Modular Structure Design + Build

Commercial



Shipping Container Home Design + Build Consultancy

Real Estate Development

Design + Construction Documents

Building Code Compliance

Structural

Mechanical, Electrical & Plumbing

Energy Compliance

Fabrication (Construction Management)



Turnkey Luxury Mobile Pop Up Trailer Design + Build

Retail Spaces

Classrooms

Experiential Design / VR

Wellness

Mobile Business

Rental Fleets (Business Opportunity)



Logo Design | Branding



Products



MEET GUESSCREATIVE LLC

Gueston Smith is the Principal / Creative Director of Guesscreative LLC, a multidisciplinary design agency, and the Head of Design at Kubed Living, a leading shipping container and modular home design + build company based in Los Angeles.

WHAT WE PROVIDE

Project Leadership: We lead from start to finish, coordinating teams and resources effectively

Creative Conscious Design: We develop innovative, thoughtfully designed modular structures, adapting to various needs and contexts.

Space Optimization: We specialize in efficient floor plans for diverse spaces, including commercial offices and retail trailers.

Collaborative Expertise: We work seamlessly with cross-functional teams, engineers, fabricators, and authorities.

Problem-Solving: We value engineer projects through strategic project management and process enhancement.

Continuous Learning: We pursue professional self development and certifications in architecture and building design. These core skills highlight our ability to lead, innovate, collaborate, and adapt.

Visit www.guesscreative.com



GUESS
CREATIVE

"GUESS" HAS ROOTS MEANING "TO VENTURE FORTH." IT CALLS US TO STEP INTO THE UNKNOWN, IMPLIES A WILLINGNESS TO VENTURE INTO THE UNKNOWN, TO EXPLORE IDEAS WITHOUT KNOWING WHERE THEY MAY LEAD. IT SUGGESTS BEING OPEN TO EXPERIMENTATION AND DISCOVERY.

WHILE **"CREATIVE"** COMES FROM THE LATIN FOR "TO GROW." IT SPEAKS TO IMAGINATION - OUR INNATE POWER TO DREAM UP NEW WORLDS.

COMBINED AS "GUESSCREATIVE", THE NAME CAPTURES
**AN ENERGETIC, VISIONARY,
UNBOUNDED SPIRIT OF CREATION;
THINKING WITHOUT LIMITS,
FREE FLOWING IDEAS,
INNOVATION THROUGH IMAGINATION.**

WWW.GUESSCREATIVE.COM



CUSTOM MODULAR SOLUTIONS



**LUXURY + PRACTICAL SHIPPING
CONTAINER STRUCTURES**

DESIGN / BUILD CONSULTANCY

GUESTON@GUESSCREATIVE.COM

www.guesscreative.com



Modular Structures

Designed | Fabricated | Delivered to the Site of Choice

Pricing: Design Fee + Cost of Build (Plus)+ Delivery (Installation Not Included)

Average Build Time 7-10 Weeks



Shipping Container Home Design + Build Consultancy

- Real Estate Development
- Design + Construction Documents
- Building Code Compliance
- Structural
- Mechanical, Electrical & Plumbing
- Energy Compliance
- Fabrication (Construction Management)



PAST CONSTRUCTED PROJECTS

CONTAINERS: THINGS TO KNOW



Shipping Containers Designed to line up at the corner posts/supports

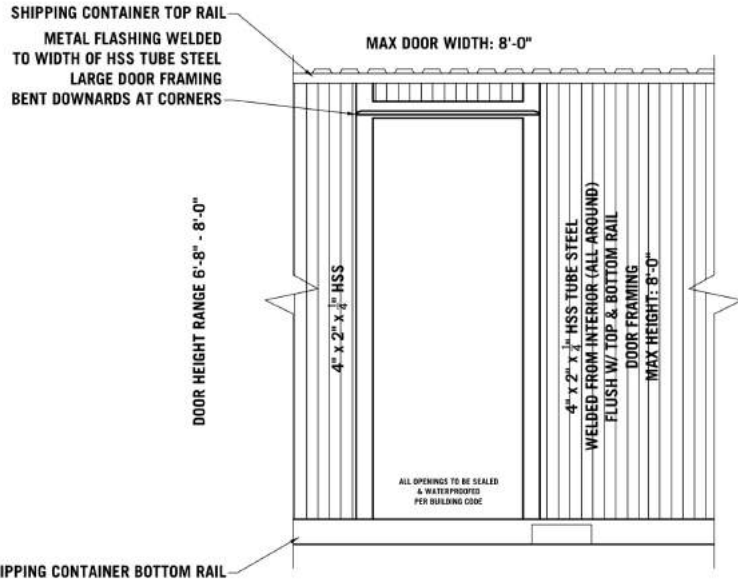
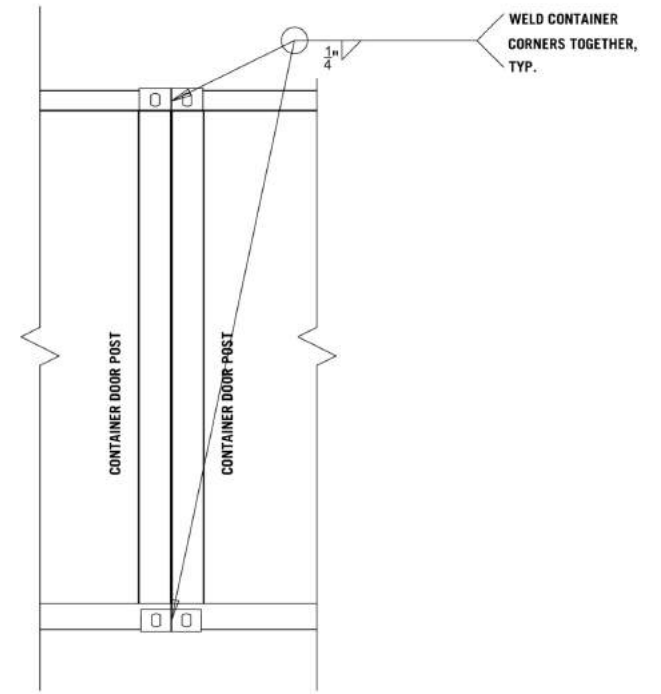
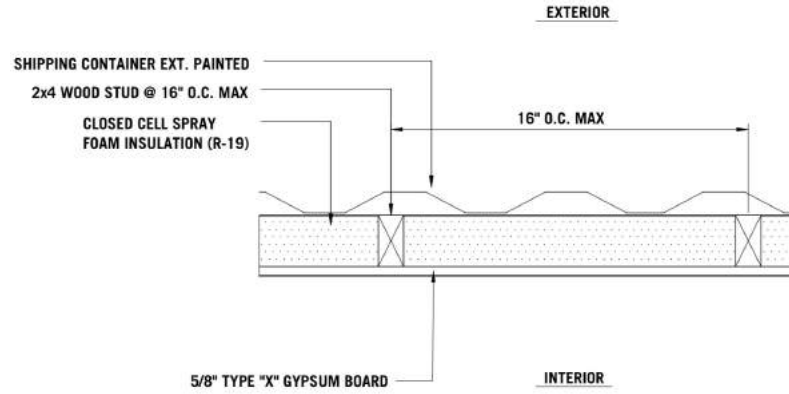
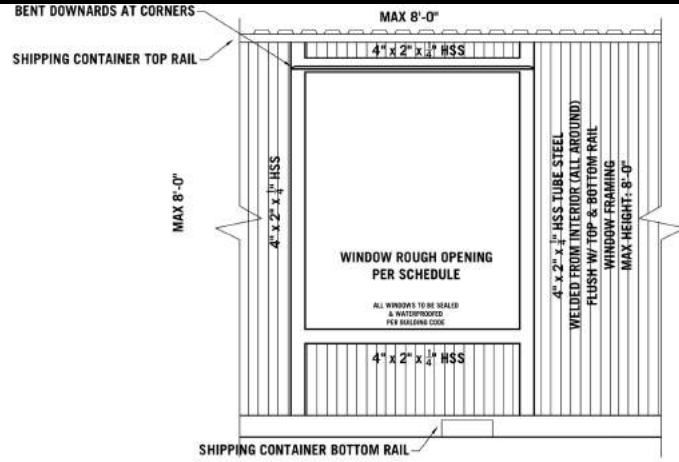
Shipping Containers are constructed within the infrastructure of transportation.

Delivery Made Easy

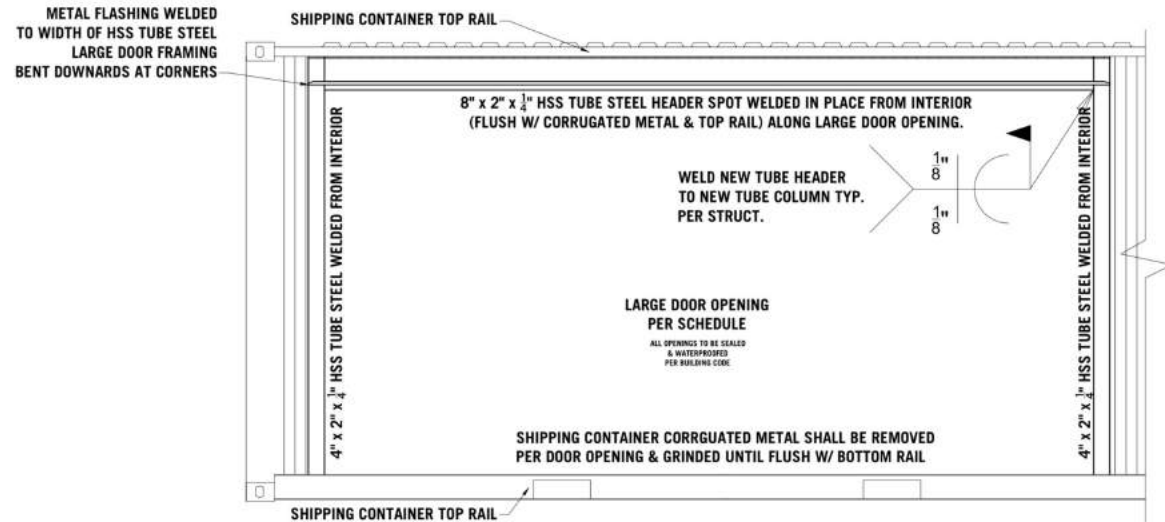
Shipping Containers can stack up to nine levels high, allowing them to serve as the building component for multistory buildings

Shipping Containers are constructed to be water tight, these vessels are made to reliably bring goods and substances over the roughest seas

CONTAINERS: THINGS TO KNOW



TYPICAL EXTERIOR FRAMING @ DOOR OPENING STRUCT. DETAIL





**Modular / Container Home
Real Estate Development
Opportunities (Kubed Living)**

Custom Shipping Container Homes Starting at \$300 / SF

Does Not Include Site Work or Delivery



TAKE YOUR BUSINESS ON THE GO

PULL UP WITH SOMETHING DIFFERENT



**TURNKEY LUXURY MOBILE
BUSINESS TRAILERS**

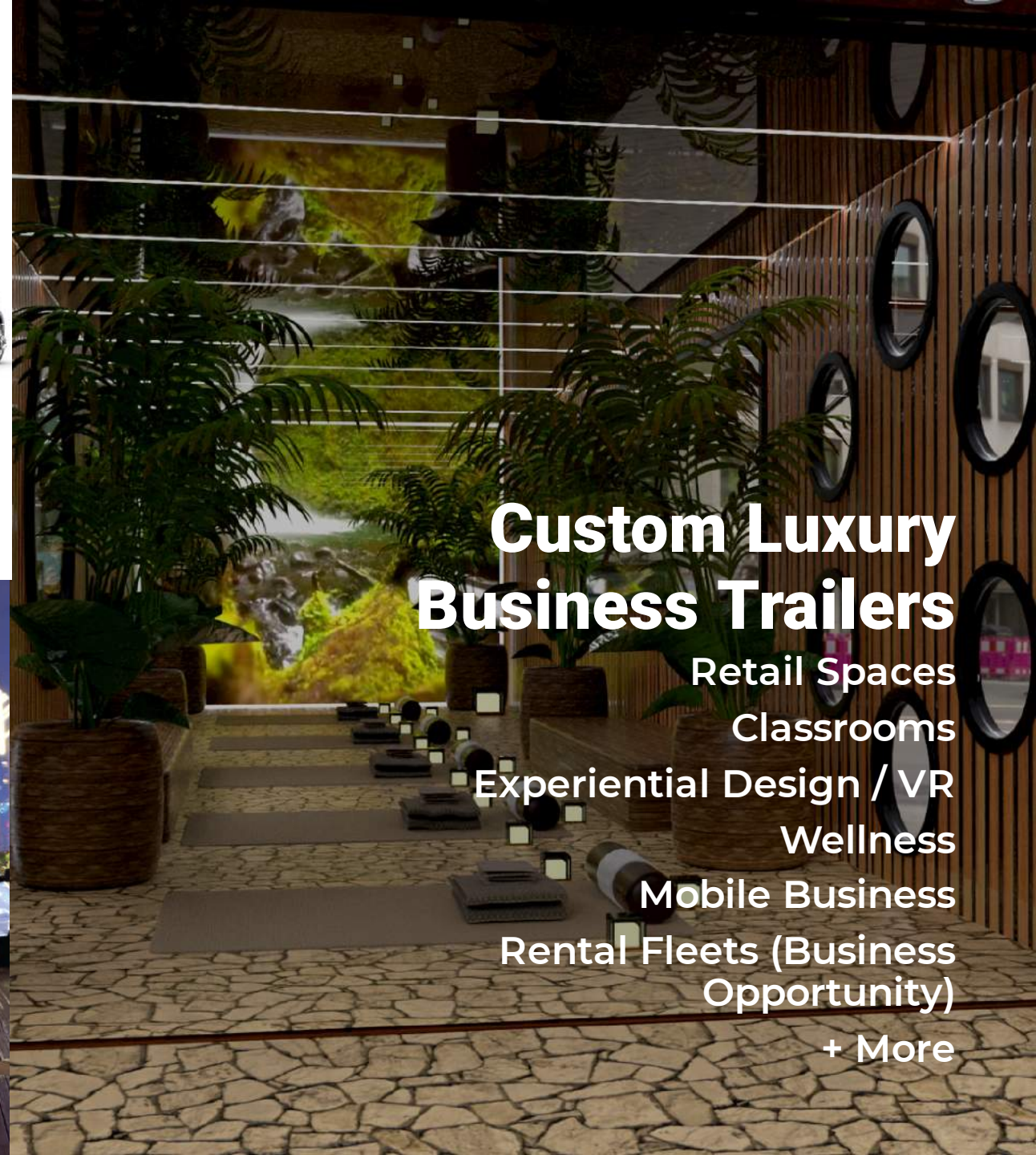
DESIGN / BUILD CONSULTANCY

GUESTON@GUESSCREATIVE.COM

www.guesscreative.com



GUESS
CREATIVE



Custom Luxury Business Trailers

- Retail Spaces
- Classrooms
- Experiential Design / VR
- Wellness
- Mobile Business
- Rental Fleets (Business Opportunity)
- + More



PAST CONSTRUCTED PROJECTS

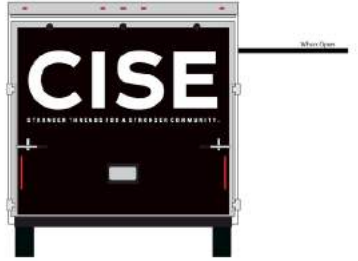
DESIGN INSPIRATION



FINISH COLOR PALETTE



3D RENDERING



Cise LLC / Pop Up Retail

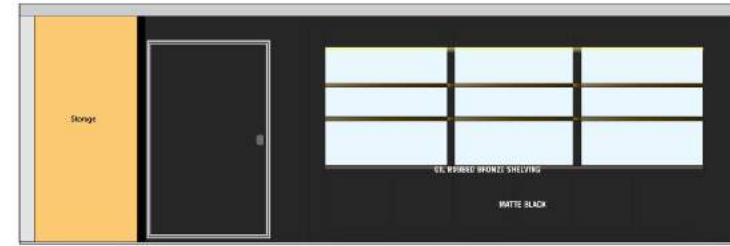
BACKGROUND: MATTE BLACK
CISE VERBIAGE: GLOSSY WHITE



Interior Drive



Interior Front



Interior Pass



Interior Back



FEED YOUR SKIN | HEAL YOUR SKIN



LOGO DESIGN

SIMPLE, MODERN & CLEAN LOGOS DESIGNED ESPECIALLY FOR YOU & YOUR BUSINESS



LOGO DESIGN

SIMPLE, MODERN & CLEAN LOGOS DESIGNED ESPECIALLY FOR YOU & YOUR BUSINESS.

GUESTON@GUESSCREATIVE.COM

www.guesscreative.com

DESIGN PROCESS



SHOW THE WORLD WHO YOU ARE.

"I AM." COLLECTION & THE DON COLLECTION



GUESS
CREATIVE

**CONSCIOUSLY DESIGNED
PRODUCTS**

GUESTON@GUESSCREATIVE.COM

www.guesscreative.com

SHOW THE WORLD WHO YOU ARE.

Introducing the "I AM" clothing collection from Guescreative LLC.

We are all defining and redefining ourselves. Guescreative's mission is to empower the next person through our passion for design and creative thinking. We believe in the power of design to inspire, inform and transform, and are dedicated to using our talents and skills to make a positive difference in the world.

This collection is designed to inspire self growth, self empowerment, self actualization, self love and belief in ourselves. The collection features sweatshirts, hats, beanies, shorts, a journal, and a high-quality water-resistant tracksuit.

Design with purpose: 'I AM' represents self-identity and the power of words to shape our identity. The tracksuit, in particular, is a standout piece with "I AM" stitched in bold letters on the back of the jacket and "Make It Happen" stitched on the front of the pants, inspiring those who see it to pursue their own dreams. Made of high-quality fabrics and stitched with care, this collection is not only stylish but also built to last.

Wear it with confidence and let the message of "I AM" guide you towards becoming the greatest version of yourself. Shop now and join us in our mission to progress our communities forward positively through the generation of opportunities for others to build wealth and create brand recognition.



I AM.



LIMITED EDITION

VISIT WWW.GUESSCREATIVE.COM



Don Obsidians
DESIGNED BY GUESSCREATIVE LLC



LETS BRING YOUR VISION TO LIFE

GUESTON@GUESSCREATIVE.COM

817.937.3793

www.guesscreative.com